

The background of the entire page is a deep blue space scene featuring a bright, glowing greenish-yellow nebula or galaxy core. A thick, white diagonal line runs from the top left corner towards the bottom right, bisecting the image. The text is rendered in a clean, white, sans-serif font.

# **GALAXY**

**METAL PRODUCTS LLC**

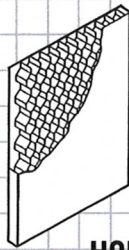
**HOLLOW METAL DOORS & FRAMES**

**PRODUCT CATALOG**



# DOORS

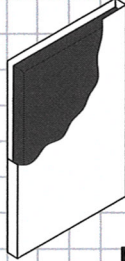
- HOT-DIP GALVANNEAL STEEL - READY FOR FINISH PAINT
- OPTIONAL UL LABEL SERVICE • OPTIONAL VISION LITE / LOUVER
- FULL FLUSH SEAMLESS FACES • INVERTED TOP AND BOTTOM CHANNELS
- INTERNAL CONSTRUCTION AVAILABLE AS HONEYCOMB OR RIB REINFORCED



Honeycomb core is securely bonded to tension levelled steel faces.

20 or 18 ga.

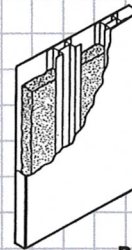
**HONEYCOMB**



Polystyrene core is securely bonded to tension levelled steel faces.

20 or 18 ga.

**POLYSTYRENE**



Steel rib stiffeners 6" on center to tension levelled steel faces. All voids filled with UL<sup>®</sup> approved fiberglass insulation.

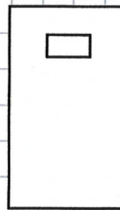
18 or 16 ga.

**RIB REINFORCED**

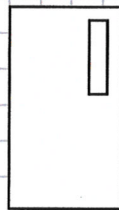
## STANDARD DOOR ELEVATIONS



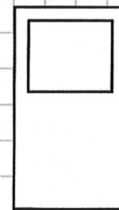
**FLUSH**



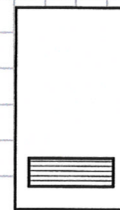
**VISION LITE**



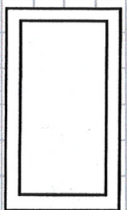
**NARROW LITE**



**HALF GLASS**



**LOUVER**



**FULL GLASS**

- Vision Lite Kits - Integral design with 1 removable glazing bead
- 1 1/2 Hour "B" Label - 100 square inches allowable glass
- 3/4 Hour "C" Label - 1296 square inches allowable glass
- Non Rated Louvers - Integral design (inverted "V" blades)
- Fire Rated Louvers - Fusible link type (supplied by Galaxy)

STANDARD STOCK SIZES			20 GAUGE				18 GAUGE		
WIDTH	2' - 0"	2' - 4"	2' - 6"	2' - 8"	2' - 10"	3' - 0"	3' - 0"	3' - 6"	4' - 0"
HEIGHT	6' - 8" OR 7' - 0"						HANDED ONLY		

**STOCK DOORS ARE FLUSH - REVERSIBLE HAND**  
 Sizes other than those shown and handed doors are available.

## HARDWARE PREPARATION - STOCK DOORS

### Single Swing

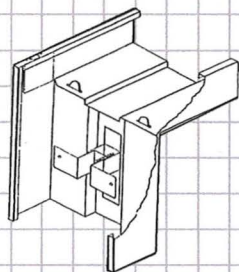
4-1/2" x 4-1/2" Template Hinges  
 161 Cylindrical Lock  
 Closer Reinforcement

### Inactive Leaf

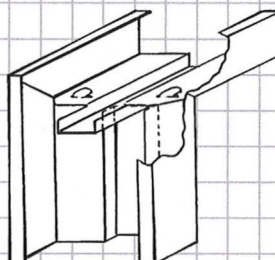
4-1/2" x 4-1/2" Template Hinges  
 4-7/8" ASA Strike Plate  
 ASA Flushbolts  
 Closer Reinforcement



- HOT-DIP GALVANNEAL STEEL - READY FOR FINISH PAINT
- MITERED CORNERS • SPECIALS • MASONRY AND DRYWALL
- OPTIONAL LABEL • AVAILABLE KNOCKDOWN OR WELDED

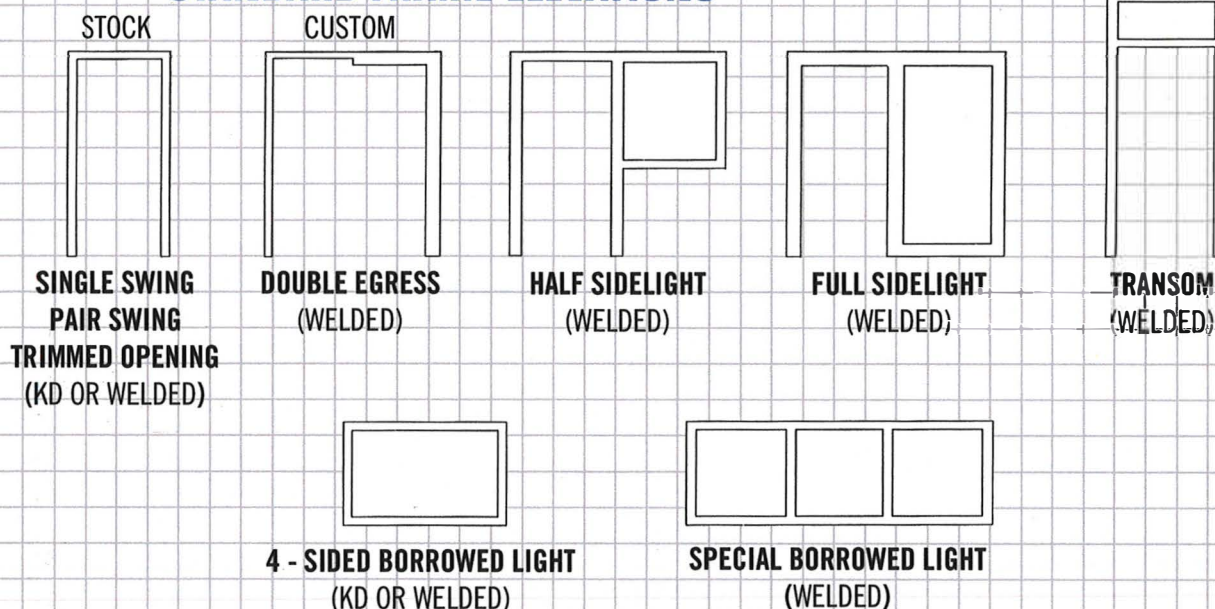


**KNOCKDOWN**  
Pressure fit anchors  
adjust for a rigid  
installation.  
Optional fire label  
(Factory Mutual)



**WELDED**  
Anchors for masonry  
and drywall.  
Optional sidelights.  
Optional UL® fire label

## STANDARD FRAME ELEVATIONS



## JAMB - SIZES (Available from stock for immediate delivery)

	SINGLE SWING								PAIR SWING				
WIDTH	2'-0"	2'-4"	2'-6"	2'-8"	2'-10"	3'-0"	3'-6"	3'-8"	4'-0"	4'-0"	5'-0"	6'-0"	7'-0"
HEIGHT	6'-8", 7'-0" OR 8'-0"												
THROAT	3-1/2"	3-3/4"	4-5/8"	4-7/8"	5-5/8"	6-1/8"	7-1/4"						

STOCK FRAMES ARE 3-SIDED - SINGLE SWING / PAIR SWING  
Non-standard sizes are available

## HARDWARE PREPARATION - STOCK FRAMES

### Single Swing

4-1/2" x 4-1/2" Template Hinges  
4-7/8" ASA Strike Plate  
Hole Punched for Silencers  
Closer Reinforcement

### Pair Swing

4-1/2" x 4-1/2" Template Hinges  
Closer Reinforcement

Super Stud Affiliated Companies. Design-Build Solutions

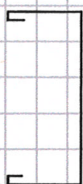


# PROFILES

## STANDARD JAMB PROFILES - 2' TRIM



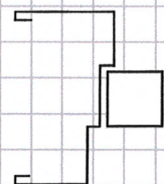
DOUBLE RABBET  
(STOCK)



TRIMMED OPENING  
(STOCK)



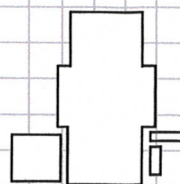
SINGLE RABBET



DOUBLE EGRESS



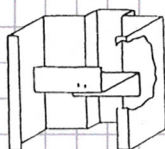
W/LOOSE  
GLAZING BEAD  
(1 X 5/8" SNAP ON)



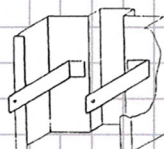
MULLION

## JAMB ANCHORS

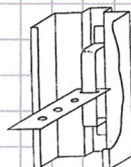
### DRYWALL



ZEE CLIP FOR  
STEEL STUD

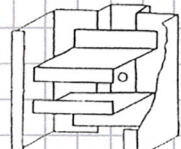


STRAPS FOR  
WOOD STUD



ADJUSTABLE STRAPS  
W/WELDED YOKE  
UL® APPROVED

### MASONRY



PUNCH & DIMPLE  
EXISTING MASONRY WALL  
(3/8" EXPANSION BOLT  
BY OTHERS)

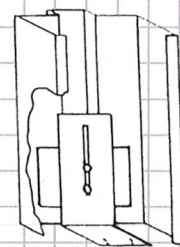
## FLOOR ANCHORS

### FIXED



WELD ON TYPE

### ADJUSTABLE (Optional)



2-1/2" HEIGHT  
ADJUSTMENT

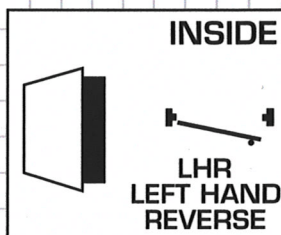
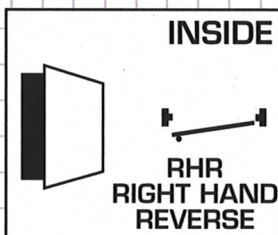
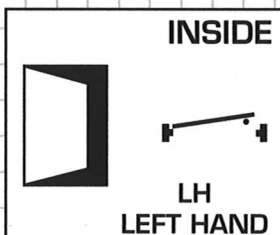
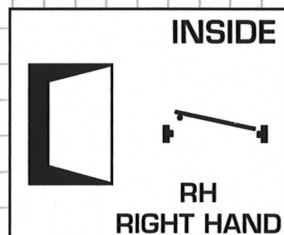
## DOOR AND FRAME HAND CHART

**How to determine hand of door and frame swing:**  
Hand all doors by standing outside on key side - facing door.

### SINGLE DOORS

**When door swings toward you and hinges are on right side of door:**  
Door is R.H.R / Frame is L.H.

**When door swings to inside and hinges are on right side of door:**  
Door is R.H. / Frame is R.H.



Call Toll Free  
1-800-294-8199

**GALAXY**  
METAL PRODUCTS LLC



## FRAME INSTALLATION PROCEDURES

OUR KNOCKDOWN PRESSURE FIT FRAMES SLIP OVER A ROUGH DRYWALL  
OPENING AND, ONCE ADJUSTED, PROVIDE A RIGID INSTALLATION

ROUGH OPENING - DOOR WIDTH + 2"  
- DOOR HEIGHT + 1"

1



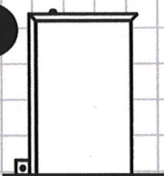
UNFOLD BASE CLIPS  
ON BOTTOM OF JAMB.

2



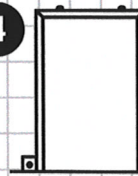
INSTALL HEADER.

3



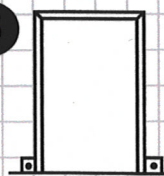
INSTALL (1) JAMB LEG, BE  
CERTAIN THAT TABS AND SLOTS  
INTERLOCK. MAKE SURE BASE  
CLIPS WRAP OUTSIDE OF WALL.

4



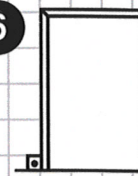
INSTALL OPPOSITE JAMB LEG,  
LEVEL FRAME.

5



A. TIGHTEN PRESSURE CLIPS  
COUNTERCLOCKWISE UNTIL SNUG.  
B. SCREW ON BASE CLIP THROUGH  
WALL INTO STUD  
C. BEND OVER HEAD TABS.

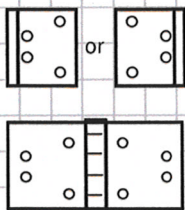
6



READY TO INSTALL GALAXY  
HOLLOW METAL DOOR

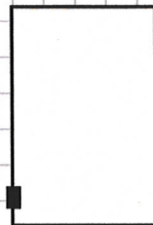
## DOOR INSTALLATION PROCEDURES

1



PLACE DUTCHMAN PLATE  
(3 PROVIDED) UNDER HINGE  
OPPOSITE KNUCKLE

2



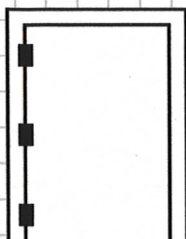
INSTALL BOTTOM HINGE ON  
THE DOOR COMPLETELY TIGHT

3



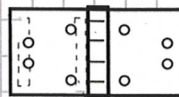
INSTALL MIDDLE & TOP HINGE  
ON THE DOOR. DO NOT SECURE  
TIGHTLY AT THIS POINT.

4



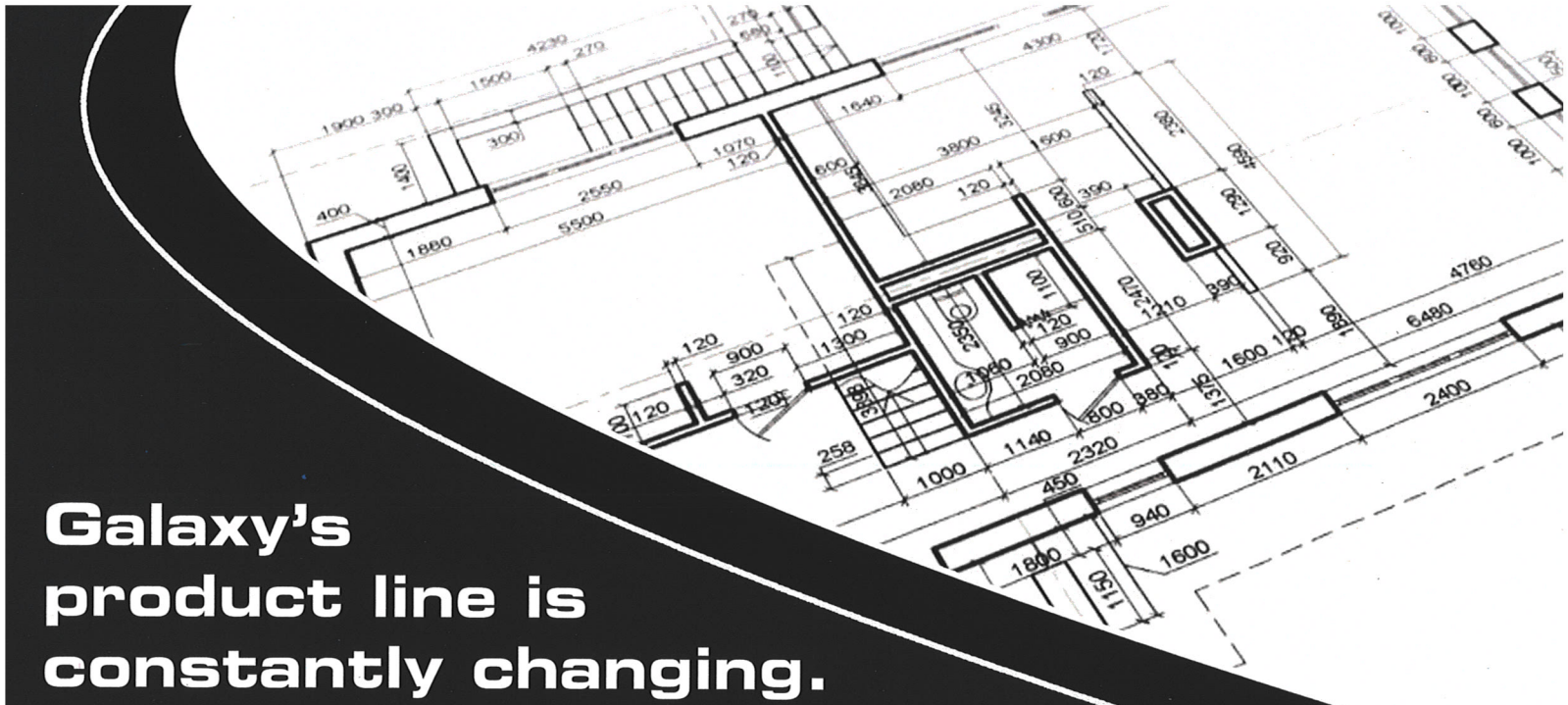
INSTALL THE DOOR TO FRAME  
BOTTOM FIRST. THE LOOSE  
HINGES ALLOW YOU TO HAVE  
MORE FLEXIBILITY OF  
ADJUSTMENT.

5



TO ADJUST THE DOOR TOWARDS  
OR AWAY FROM THE STRIKE  
(IF NEEDED). CARDBOARD SHIMS  
(USUALLY FROM THE HINGE BOX)  
CAN BE ADDED BEHIND THE HINGE.



A detailed architectural floor plan of a building, showing various rooms, corridors, and structural elements. Dimensions are provided in feet and inches throughout the plan.

**Galaxy's  
product line is  
constantly changing.**

**Whether you are looking for custom  
frames, doors, window walls or  
custom fabrication, Galaxy  
has you covered!**

## **EMBOSSED RAISED PANEL DOORS**

Galaxy's line of commercial hollow metal embossed raised panel doors provide a wide range of flexibility for your architectural needs. All doors are available in standard and high definition panels. Designs include 1,2,4 and 6 panel. Available in 20 and 18 gage galvaneal steel and are 1 3/4" thick. Custom sizes and hinge locations available.





**Stile & Rail  
Door Assembly**

**GALAXY GUARDIAN**

## **The Perfect Fire Door For Your Apartment Complex!**

### **STANDARD SPECIFICATIONS:**

- *18 Gauge Face Material*
- *Door rated at STC 39*
- *7 Gauge Hinge Reinforcement*
- *16 Gauge Lock Reinforcement*
- *1-1/2 HR Rated VTEC  
Label (ULIOC Test)  
Rated up to 3'0"W x 7'6"H*
- *18 Gauge Top & Bottom Channel*
- *Seam Construction  
(Seamless Available)*

**All One Panel Recessed Doors  
Are Ready for Field Painting!**

### **SIZES AVAILABLE:**

- *2/8 - 4/0 W • 6/8 - 8/0 H*
- *Highly Customizable*
- *Available with 45° or 90° Stops*
- *90° Stop, Optional Molding Applied*
- *2 Panel, 4 Panel & 6 Panel Available*

**For More Information Call:**

**908.668.5200**

# **GALAXY**

**METAL PRODUCTS LLC**

2960 Woodbridge Ave.  
Edison, New Jersey 08837  
T: (908) 668-5200 F: (908) 668-5202  
Toll Free 1-800-294-8199  
[www.galaxymetalproducts.com](http://www.galaxymetalproducts.com)





# **GALAXY METAL PRODUCTS LLC**

has a history as a **QUALITY** manufacturer of hollow metal doors and frames. We can supply "stock type" knockdown frames and economical honeycomb insulated doors to "custom" hollow metal doors and frames manufactured to architectural specifications and complex finished hardware requirements.

All our doors and frames are manufactured in compliance with Underwriters Laboratories, Factory Mutual, and Materials and Equipment Acceptance (MEA) of New York City.

Our sales and distribution services all of the Northeast, including the Baltimore and Washington, D.C. areas.

## **GALAXY CAN PROVIDE YOU WITH:**

- Fast and Competitive pricing.
- Complete engineering service for the development of shop drawing submittals.
- The supply of finished hardware for your project.
- A field technician is available to assist you with all your on-site issues.

**Galaxy's experienced Sales and Engineering Departments can provide technical support to guide you through any situation that may develop!**

**VISIT US ON THE WEB AT:  
[galaxymetalproducts.com](http://galaxymetalproducts.com)**

#### **WARRANTIES AND LIMITATIONS**

All products presented herein are warranted to be free from manufacturing defects in material and workmanship. Damages for the breach of this warranty and buyers sole remedy shall be the return of goods and the repayment of the price thereof or the replacement of such non-conforming goods at the sole option of the seller. Seller specifically excludes any liability for any consequential damages as a result of the non-conformance of the goods. This aforesaid warranty is exclusive to the direct purchaser from Galaxy Metal Products and is not assignable or transferable to any third party. This warranty is in lieu of and EXCLUDES ALL OTHER WARRANTIES NOT EXPRESSLY SET FORTH HEREIN, whether express, implied or by operation of the law. Specifically EXCLUDED ARE ANY IMPLIED WARRANTY OF MERCHANTABILITY OR FITNESS FOR A PARTICULAR PURPOSE. All details, specifications and other details of the products herein described are merely intended as a general guide for the use of particular product(s) described and the use thereof is at the sole option of the purchaser and should be with the specific direction and evaluation of a design professional and the description is not intended as a recommendation for any use. Galaxy Metal Products denies any liability for damages resulting from the use of the details or specifications or improper application or installation of these products.

#### **GOVERNING LAW**

The parties of this sale hereby consent to the jurisdiction of the court of the State of New Jersey, located in the County of Middlesex. New Jersey law shall apply in all such actions. The Statute of Limitations for any such action based upon an alleged breach shall be one (1) year from the date of delivery of the product, and no action may be maintained after said one (1) year.

**OUR CUSTOMER SERVICE  
DEPARTMENT IS OPEN  
FROM 7:00 AM TO 5:00 PM,  
MONDAY - FRIDAY  
TO SERVE YOU BETTER!**

**GALAXY**  
METAL PRODUCTS LLC

2960 Woodbridge Ave.  
Edison, New Jersey 08837  
T: (908) 668-5200 F: (908) 668-5202  
Toll Free 1-800-294-8199